

USER MANUAL

KIMP23 REMOTE PRINTER FOR CLASSES 210 AND 310 PORTABLE INSTRUMENTS



Technical features

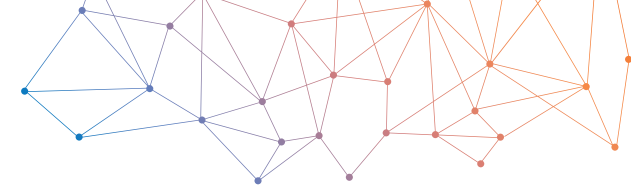
- Dimensions (without protective cover): 85.5 mm x 150 mm x 55 mm
- Weight (without protective cover): 400 g
- Operating temperature: from 0 to 50 °C
- Storage temperature: from -20 to +60 °C

Print values during the measurement

- Press On/Off button of the printer to turn it on.
 - Press "Imprim" function key of the portable instrument on the measurement screen.
- Measurement results are printing on the ticket.
- Press On/Off button when printing is finished to turn the printer off.



In order to have a correct printing, infrared sensors of the printer and portable instrument must face each other (see pictures above).



USER MANUAL

KIMP23 REMOTE PRINTER FOR CLASSES 210 AND 310 PORTABLE INSTRUMENTS



Technical features

- Dimensions (without protective cover): 85.5 mm x 150 mm x 55 mm
- Weight (without protective cover): 400 g
- Operating temperature: from 0 to 50 °C
- Storage temperature: from -20 to +60 °C

Print values during the measurement

- Press On/Off button of the printer to turn it on.
 - Press "Imprim" function key of the portable instrument on the measurement screen.
- Measurement results are printing on the ticket.
- Press On/Off button when printing is finished to turn the printer off.



In order to have a correct printing, infrared sensors of the printer and portable instrument must face each other (see pictures above).



Change the paper roll

- Raise the upper part of the printer pulling up the transparent part.
- Put a new paper roll (both sides of the paper are different: the brightest side is the printed side and must faced the user).
- Pull up about 0.50 cm of paper.
- Close the upper part of the printer.



Transparent part
Upper part



Paper location



Introduction of
the paper roll



Paper properly
introduced

Change the batteries

- Remove the protective cover of the printer.
- Remove the batteries cover.
- Remove the used batteries.
- Put some new 1.5 V LR6 AA batteries observing proper polarity.
- Put the battery cover.



Batteries cover

LED indications

The LED above the On/Off button has several meanings:

- Continuous green: printer turned on and ready to operate
- Sequence of one flash: paper is missing or there is not any paper out the printer → put a paper roll or let 0.5 cm of paper out
- Sequence of 2 flashes : thermal too hot → let the head cool down
- Sequence of 3 flashes : discharged → change batteries

sauermanngroup.com

Sauermann Industrie
ZA Bernard Moulinet
24700 Montpon-Ménéstérol - France
+33 (0)5 53 80 85 00
services@sauermanngroup.com



NT EN_imprimante - KIMP23 - 04/10/24 – Non-contractual document – We reserve the right to modify the characteristics of our products without prior notice.

Change the paper roll

- Raise the upper part of the printer pulling up the transparent part.
- Put a new paper roll (both sides of the paper are different: the brightest side is the printed side and must faced the user).
- Pull up about 0.50 cm of paper.
- Close the upper part of the printer.



Transparent part
Upper part



Paper location



Introduction of
the paper roll



Paper properly
introduced

Change the batteries

- Remove the protective cover of the printer.
- Remove the batteries cover.
- Remove the used batteries.
- Put some new 1.5 V LR6 AA batteries observing proper polarity.
- Put the battery cover.



Batteries cover

LED indications

The LED above the On/Off button has several meanings:

- Continuous green: printer turned on and ready to operate
- Sequence of one flash: paper is missing or there is not any paper out the printer → put a paper roll or let 0.5 cm of paper out
- Sequence of 2 flashes : thermal too hot → let the head cool down
- Sequence of 3 flashes : discharged → change batteries

sauermanngroup.com

Sauermann Industrie
ZA Bernard Moulinet
24700 Montpon-Ménéstérol - France
+33 (0)5 53 80 85 00
services@sauermanngroup.com



NT EN_imprimante - KIMP23 - 04/10/24 – Non-contractual document – We reserve the right to modify the characteristics of our products without prior notice.