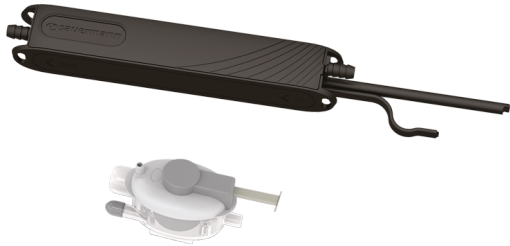


DATA SHEET

# Si-20

## Piston pump

Sauermann® part #: SI20UL02UN12 - SI20UL02UN23



### Fits discreetly inside the air conditioning unit

The Si-20 sets a new record for its slim casing design, allowing it to easily fit inside any type of air conditioning unit or lineset cover. Offering best-in-class performance and sound levels for a mini pump of its size, this model delivers unmatched reliability. The patented piston pump technology, which offers a high degree of energy efficiency, is designed to remove condensates from air conditioning units of up to 20 kW/60,000 BTU.

### Benefits



#### Silent

- Operates at just 19 dBA, delivering a record power-to-noise ratio.
- Flexible tube supplied to reduce vibration.



#### Reliable and eco-friendly

- Built to withstand any type of environment.
- Capable of discharging condensates containing small particles.
- Designed as a possible replacement for most market-standard mini pumps.
- Can be taken apart for recycling of plastic parts and components.



#### Easy to install

- The slimmest mini pump money can buy: cross-section of just 1 1/16" x 1 1/16".
- Compatible with all market-standard air conditioning units.
- Fits inside lineset covers and fixes to cooling tubes with four side attachments for double wire clamps.
- Disconnectable pump and detection unit for easy installation and maintenance.
- Installation made even easier with fasteners, plates, pre-installed anti-siphon device and other accessories included.



#### Ultra-powerful

- Record size-to-weight ratio: maximum flow rate of 5 gph, for air conditioning units of up to 20 kW/60,000 BTU.
- Patented piston pump technology for exceptional efficiency.



### Kit content

- Piston pump with connectors: 4.9' power cable, 7 7/8" pump cable.
- 1 detection unit with connector (4.9' power cable).
- Clear PVC tube int. Ø 1/4" - L 39 3/8", fitted with pre-mounted "Drain Safe Device" connector.
- 1 Split Connector, 1/2" - 10/16"
- Detection unit installation kit:
  - rubber elbow 90° int. Ø 0.6" x L 6"
  - vent tube int. Ø 5/32" x L 3"
  - mounting rail
  - adhesive
  - 3 double wire clamps
  - 3 tie wraps, 0.1 x 8"
- 1 attachment unit: 1 mounting plate + 1 rubber damper

## Technical specifications

Max. flow rate	5 gph
Max. suction head	10 ft
Max. discharge head	33 ft - flow rate = 1.06 gph
Max. pressure	46 ft - flow rate = 0 gph
Sound level	19 dBA
Mains supply	SI20UL02UN12: 120 V~ 60 Hz - 13 W SI20UL02UN23: 208 - 230 V~ 50/60 Hz - 15 W
Insulation class	□ (double insulation)
Detection levels	On: $\frac{5}{16}$ " / Off: $\frac{7}{16}$ " / Safety: $\frac{3}{4}$ "
Safety switch	NC 3 A resistive load – 250 V
Thermal protection (overheating)	239°F (auto-reset)
Max. condensate temperature	95°F
Operating and storage temperature	+36 to +122 °F
Operating cycle	100 % - Continuous duty
Protection	IPX2
Safety standards	UL certified by Intertek CSA certified
RoHS directive	Compliant
WEEE directive	Compliant
Pump dimensions	L 7 $\frac{1}{16}$ " X W 1 $\frac{1}{16}$ " X H 1 $\frac{1}{16}$ "
Packaging	L 7 $\frac{1}{64}$ " X W 7 $\frac{1}{64}$ " X H 2 $\frac{53}{64}$ "
Weight (including box)	1 lbs
Masterpack	6 pieces

## Applications

For use with any air conditioning unit of up to 20 kW/ 60,000 BTU

## Accessories

Name	#Part
 Clear PVC hose int. Ø 1/4"	ACC00909: 16.4' ACC00910: 164' ACC00914: Braided, 164'
 5 self-sealing fittings for hose int. Ø 1/4"	ACC00919
 Replacement detection unit	ACC02958

