

DATA SHEET

SI 1805

Tank pump

Sauermann® part#: SI1805SIAN23



Reduced dimensions

The SI 1805 pump is designed to be easily installed whatever the layout of the premises.

Capable of evacuating up to 500 l/h, the SI 1805 pump is suitable for air conditioning units and industrial refrigeration displays.

Strong, the SI 1805 tolerates charged, high temperature and acidic condensates (pH>3.4) produced by gas condensing boilers.

Benefits



High performance

- Can discharge condensates up to 5.4 m
- Up to 500 l/h, for shorter running time
- Low sound level – quiet operation



Easy hydraulic connection

- New quarter turn easily removable check valve, designed to facilitate Ø int. 10 mm (3/8") hose plug in.
- 2 inlet holes Ø 24 and 21 mm



Versatile

- Easily removable tank and reversible pump, to allow mounting rather on the left or on the right of the application and choosing the side of the water exit.



High resistance

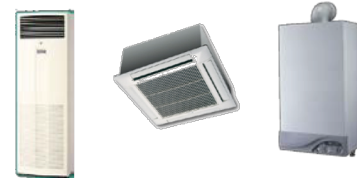
- Oil and acid resistant float
- Mechanical structure resistant to shocks

Kit content

- One-piece centrifugal pump with tank (0.5L)
- Integrated barb end check valve Ø ext. 10 mm (3/8")
- Power cord (1m, Bare ends – L, N, G)
- Safety switch cord (1m, bare ends)
- Ø10 mm to 6 mm (3/8" to 1/4") adaptor for clear tubing
- 2 screws + 2 plugs

Technical specification

Max. flow rate	500 l/h
Max. discharge head	5.4 m
Max. pressure	5.8 m (flow rate = 0)
Sound level in application at 1m(3.3ft): ≤ 47 dBA (Measured in Sauermann acoustic lab, pump operating with water)	
Mains supply	230 V~ 50/60 Hz - 90 W
Detection level	ON: 32 mm; OFF: 25 mm; Safety: 39 mm
Safety switch	NC 4 A resistive – 250V
Max. condensate temperature	65 °C, 80 °C in short peak
Max. condensate acidity	pH > 3.4 (Gas condensing boilers)
Thermal protection (overheating)	120 °C (auto-reset)
Operating and storage temperature	+36 to +122 °F
Operating conditions	30 %: 3 s ON – 7 s OFF
Protection	IP20
Safety standards	CE, EAC
RoHS directive	Compliant
WEEE directive	Compliant
Pump dimensions	L 195 x W 130 x H 132 mm
Tank dimensions	L 195 x W 130 x H 43 mm
Box dimensions	L 235 x W 135 x H 185 mm
Weight (including box)	2.0 kg
Packaging	10 pcs



Applications

- Column air conditioning units
- Multi cassettes
- Ducted units
- Gas condensing boilers
- High efficiency gas furnace
- Refrigerated display cabinets
- Evaporators

Accessories

	Name	#Part
	Hose Ø int. 10 mm (3/8")	ACC00911: 25 m ACC00915: Braided, 25 m
Inlet adaptators		
	Ø int. 24/25 mm	ACC00936
	Ø int. 32 mm	ACC00937
	Ø int. 40 mm	ACC00938
	Check valve For replacement Ø ext. 10 mm (3/8")	ACC00925

Actual flow rates (l/h)

Total tube length (int. Ø 10 mm, 3/8")

Vertical discharge head	5 m	10 m	20 m	30 m
1 m	460	380	280	200
2 m	390	320	240	180
3 m	300	250	190	150
4 m	200	180	130	100
5 m	90	80	60	50