

DATA SHEET

SKCT



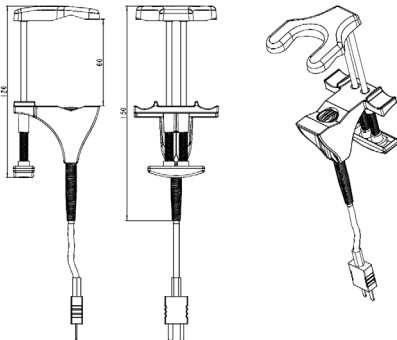
K thermocouple temperature probe with lamella contact and spring for pipes

Probe features

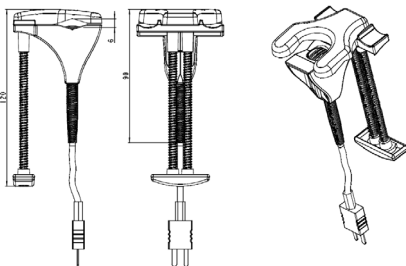
- Thermocouple type K class 1
- Measuring range from -50 °C to +150 °C
- Very fast response time

Dimensions

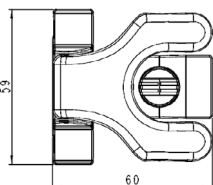
- Probe opened



- Probe closed



- Top view



Technical features

Operating temperature	From -50 °C to +250 °C
Accuracy	±1.5 °C
Pipes diameter	From 10 to 50 mm
Storage temperature	From -20 °C to +80 °C
Spring clip	PA 6.6 + 30% glass silk, from -40 °C to +85 °C
Output	By straight cable, 2 m length Male miniature connector (standard)
Operating temperature for cable (PVC)	120 °C

Application

- With TK 61 portable instrument

