

INSTALLATION MANUAL

BI 310

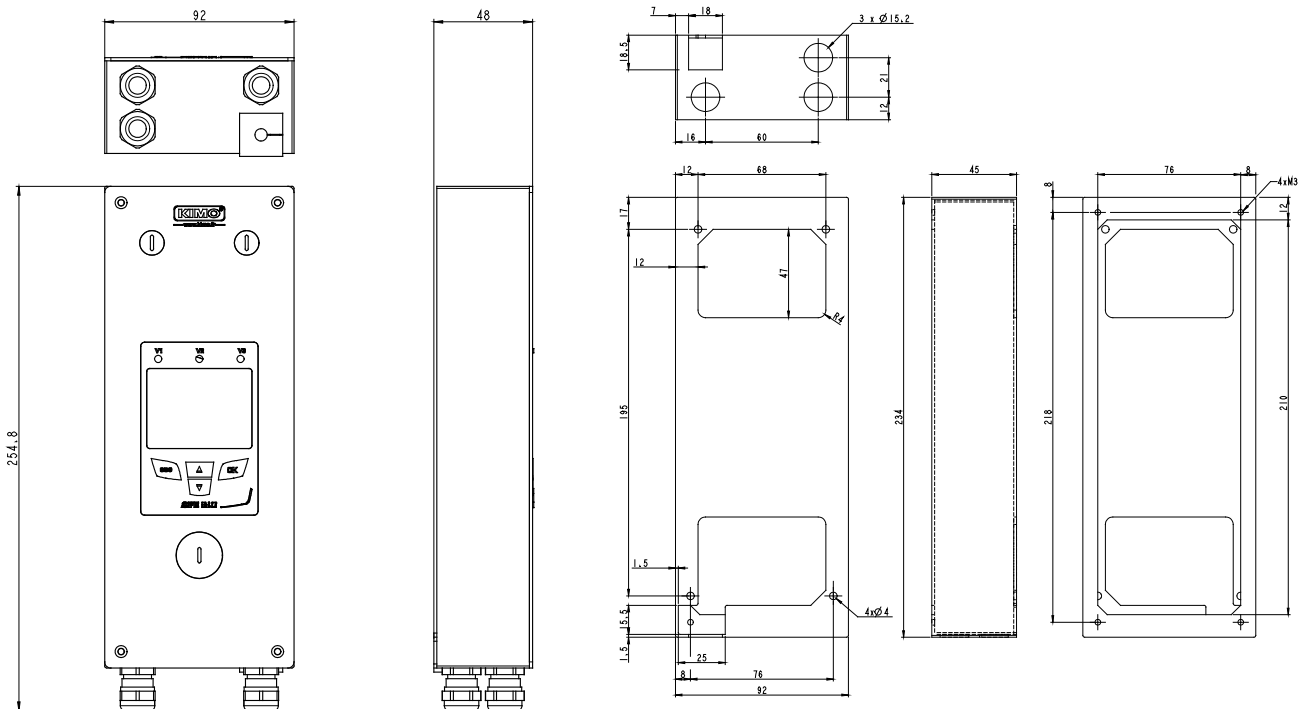
Stainless steel housing for surface mounting of the CPE310-S and ATE-310 devices



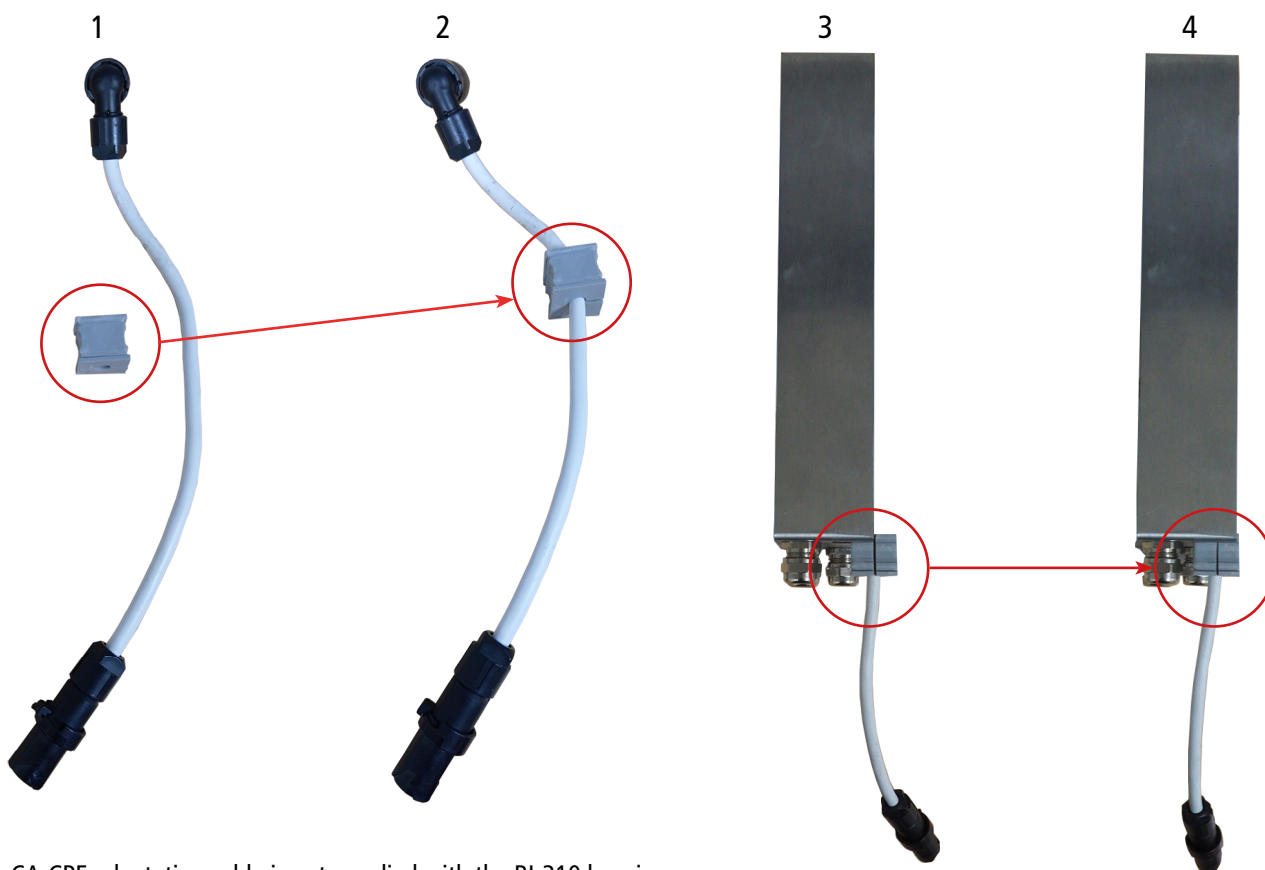
Kit content

- Locknuts x3
- Cable glands x3
- Cable glands caps x3
- Grommet x1
- Clogged grommet x1

Dimensions (mm)



Installation of the grommet on the CA-CPE cable*



*The CA-CPE adaptation cable is not supplied with the BI-310 housing.

Installation of the clogged grommet

When the adaptation cable is not used, replace the grommet by the clogged grommet (a) and the cable gland by the cable gland caps (b).

