



DATA SHEET

LX 200

Luxmeter



LX200 hand-held luxmeter, self-contained and automatic is specially designed to illuminance measurement. It allows storage of datasets for processing on a computer via the LLX200 software.

- **Instantaneous illuminance**

Displaying of instantaneous / maximum / minimum values.

- **Relative illuminance**

Allows a relative measurement to a reference point to quantify a light input or an illuminance decrease.

- **Evolution of illuminance according to weather conditions**

Storage of temporal evolution of illuminance for the follow up of environment conditions.

- **Cartography of illuminance – Spatial representation**

Coloured representation according levels obtained for printing of report (on a computer such as PC).

- **Uniformity**

Calculation of the min / ave ratio for determination of illuminance uniformity at workstation according to standards.

- **As per following standards:**

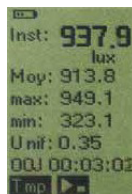
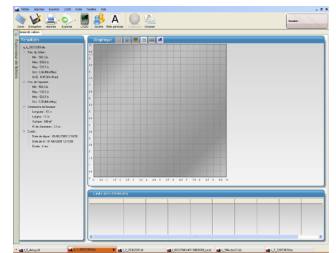
- NF EN 12464-1 – Lighting of workplaces (inside)
- NF EN 12464-2 – Lighting of workplaces (outside)
- NF EN 12193 – Lighting of sports facilities

- **Supplied with LLX200 software**

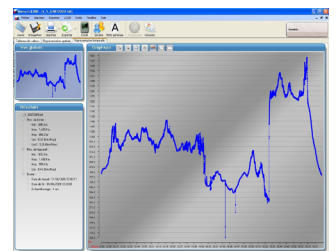
Operating software for data processing and printing of reports.



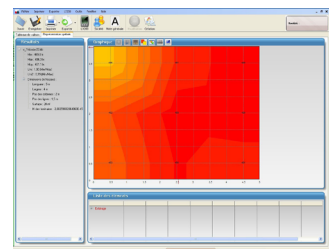
Determination of the illuminance uniformity of a local with graphic representation of workstations and luminaries



Following temporal evolution of illuminance of a workstation or a journey



Illuminance cartography with coloured nuance of a workstation (sports facilities)



Illuminance measuring range

from 0.0 to 200 000 Lux

Display	Unit	Resolution	Accuracy***
0.0 to 10.0	lx	0.1	± 2% of reading or ± 2 lux
10.0 to 99.9	lx	0.1	
100.0 to 999.9	lx	0.1	
1000 to 9999	lx	1	
10.00 to 99.99	klx	0.01	
100.0 to 200.0	klx	0.1	

from 0 to 18 585 fc

Display	Unit	Resolution	Accuracy***
0.00 to 1.00	fc	0.01	± 2% of reading or ± 0.19 fc
1.00 to 99.99	fc	0.01	
100.0 to 999.9	fc	0.01	
1000 to 9999	fc	1	
10.00 to 18.58	kfc	0.01	

Kit content

- LX200 housing with silicon photodiode sensor and glass filter correction.
- Transport case
- 3 LR3-AAA batteries
- Calibration certificate
- User manual
- LLX200 software

Option

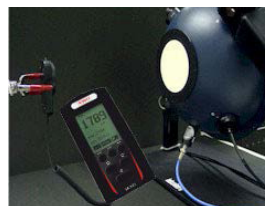
- Extension for remote cell, 5 m length
- Battery module, 5 days autonomy
- AC adapter USB type

Metrology

LX200 instrument is calibrated on a specific optical bench. It comes with its calibration certificate. Our standard reference instruments are duly linked to COFRAC.

Technical specifications

Measuring range	From 0.0 to 200 000 Lux From 0.00 to 18585 fc
Directional sensitivity (f2)*	< 6%
Linearity (f3)*	< 2%
Measurement capability**	From 04h30 to 99 days
Display	Backlit LCD graphic 128 x 64
Conditions of use (°C/%RH/m)	From 0 °C to +50 °C. In non-condensation condition. From 0 to 2000 m.
Storage temperature	From 0 °C to +50 °C
Housing dimensions (without sensor)	120 x 58 x 34 mm
Weight (housing + sensor + battery)	185 g
Mini-USB plug	For USB power supply adapter and data transfer
Power supply	3 batteries 1.5 V type LR3-AAA
Autonomy	72 hours minimum, continuous operation
European directives	2004/108/EC EMC; 2006/95/EC Low tension; 2011/65/EU RoHS II; 2012/19/EU WEEE



*The f2 and f3 coefficient are defined according to the French NF C 42-710 standard.

**According to the mode (uniformity, temporal or cartography)

*** All the accuracies indicated in this technical datasheet were stated in laboratory conditions, and can be guaranteed for measurements carried out in the same conditions, or carried out with calibration compensation.