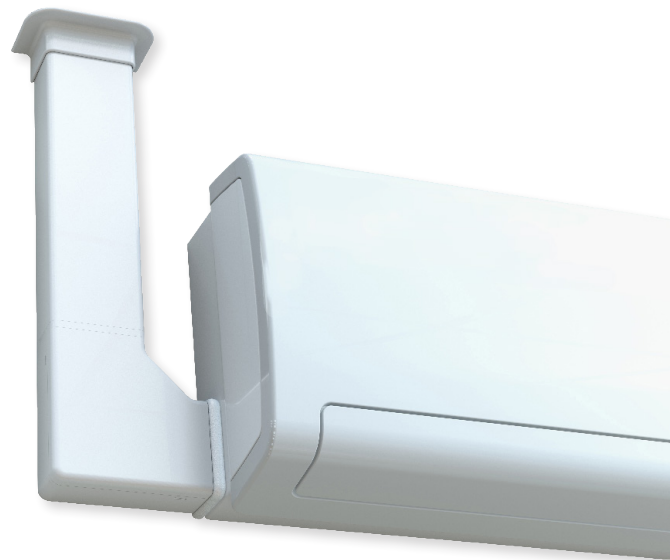


Delta Pack

Ready to install

The performance of our Si-10 with ducting for install next-to the air conditioning unit.



Suitable for

- Up to 5.5 tons
- Wall mounted units

Performance

- 5 gph max. flow
- 33' max. discharge



Drain safe device



Easy installation



Reversible mounting

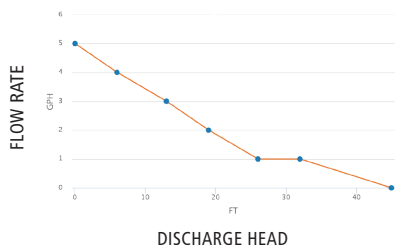
Delta Pack tech specs

Max. Flow rate	5.0 gph
Max. Discharge head	33ft; flow rate = 1 gph
Max. Pressure	46ft; flow rate = 0 gph
Sound level at 3.3ft	22 dBA according to EN ISO 3744 (measured at LNE lab, pump operating with water, out of application)
Power supply	208-230 V ~ 50/60 Hz - 14 W (DP10UL02UN23)
Insulation class	Double insulation <input type="checkbox"/>
Detection levels	On: $^{23}/_{32}$ " / Off: $^{1}/_{2}$ " / Safety: $^{13}/_{16}$ "

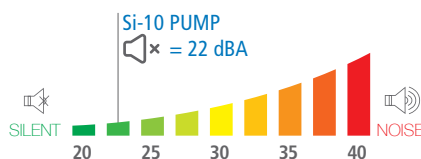
Safety switch	NC 8A resistive - 250 V
Thermal protection	239°F auto-reset
Operating conditions	100%: Continuous duty
Cover dimensions	L 5 $^{1}/_{8}$ " x W 5 $^{1}/_{8}$ " x H 2 $^{3}/_{8}$ "
Duct dimensions	L 30" x W 3" x H 2 $^{3}/_{8}$ "
Safety standards	UL / CSA certified by Intertek
RoHS & WEEE directives	Compliant
Packaging	3.4 lbs - L 30" x W 8 $^{7}/_{8}$ " x H 2 $^{3}/_{8}$ "
Masterpack	10 pieces



Actual flow rates (GPH)



Sound level



Recommended accessories



- Clear PVC hose, 1/4" i.d.**
- ACC00909: 16ft roll
 - ACC00910: 164ft roll



- Self-sealing fitting to connect discharge tube to drain pipe.**
- ACC00919, 5 pcs, for 1/4" i.d.



- Anti-siphon fitting**
- ACC00922, 5 pcs, for 1/4" i.d.

What's in the box

- Si-10 piston pump with clear pvc tube fitted with a premounted drain safe device
- 5' power cable: 2 power wires, 2 safety contact wires
- Vent tube
- 2-part elbow (base and cover)
- 30" of ductline
- Elbow / Fuct gasket
- Rubber elbow / split gasket
- Ceiling duct cover
- 20" flexible hose (for connection to the split)
- 6 screws and plugs, & 2 pipe clamps