



TECHNICAL PERFORMANCE DATA

Mains supply 230V~ 50Hz – 132W – 1.0A
 Max flow rate 700 l/h
 Max discharge head 24 m

Water levels On=50mm, Off=37mm, Alarm=54mm
 Alarm contact NO 8A resistive – 250V
 Thermal protection none

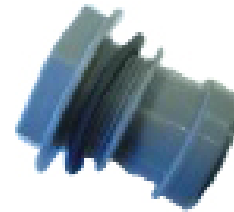
Pump dimensions L 610 x W 235 x H 80 mm
 Weight (including box) ± 5kg
 Packaging Unitary

ACTUAL FLOW RATES

Vertical Discharge Head	Flow Rate l/hr
0m	700
6m	500

ACCESSORIES

ACC 00340: for hose 1"1/2, Ø 40mm ID



FEATURES

- Ability to discharge heavy and contaminated condensates
- Stainless steel tank
- Energy efficient – low power consumption
- Integrated non return valve
- Quick release of tank lid for easy maintenance
- Easy clean mesh filter
- Suitable for mild acid and hot condensates (56°C max in continuous, 65°C max in peak)
- 6.5 l tank capacity
- 2.5 l drink cycle
- NO high level Alarm contact
- 40mm Inlet adaptor supplied
- 2 way entry
- Sealed entries
- 13mm pump outlet

APPLICATIONS

- Display cold cabinets
- Cold room evaporators
- Laboratory evaporators