

SI 1830

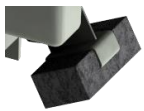
CENTRIFUGAL PUMP



Durable pump

The SI 1830 pump is designed to be easily installed whatever the layout of the premises. Capable of evacuating up to 400 l/h, the SI 1830 pump is suitable for air conditioning units and industrial refrigeration displays. Strong, the SI 1830 tolerates charged, high temperature and acidic condensates (pH>2) produced by oil condensing boilers.

BENEFITS



• High resistance

- Heavy duty **IPX4** design
- **Oil and acid resistant** float
- Mechanical structure **resistant to shocks**

• High performance

- Can discharge condensates **up to 3.7m**
- **Up to 400 l/h**, for shorter running time
- **Low sound level** – quiet operation



• Installation in any place

Pump can be floor mounted, attached on a wall or stand alone without tank.

• Versatile

Easily removable tank and reversible pump, to allow mounting rather on the left or on the right of the application and choosing the side of the water exit.

KIT CONTENTS



- One-piece centrifugal pump with tank (0.5L)
- Integrated barb end check valve Ø ext. 10 mm (3/8")
- Power cord (1.5m, **European plug**)
- Safety switch cord (1m, bare ends)
- Inlet hose: 5 m roll Ø int. 10 mm (3/8")
- Adaptor Ø int. 15-20-24-32-40 mm (Ø int. 5/8"-3/4"-1"-1 1/4"-1 1/2")
- 2 screws + 2 plugs

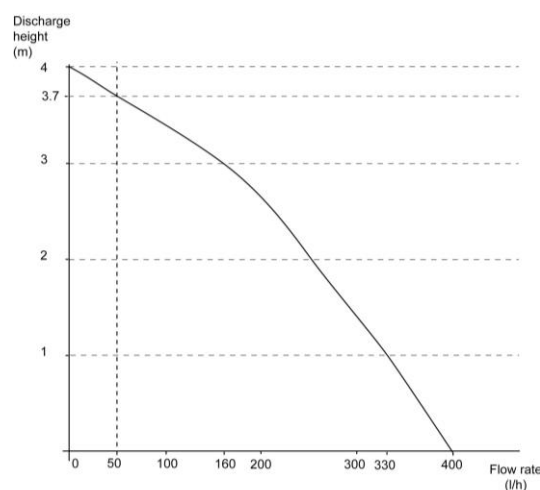
APPLICATIONS

- Column air conditioning units
- Multi cassettes
- Gas & oil condensing boilers
- High efficiency gas furnace
- Refrigerating display cabinets
- Evaporators
- Ducted units



TECHNICAL SPECIFICATION	
Max. flow rate	400 l/h
Max. discharge head	3.7 m (flow rate=50l/h)
Max pressure	4 m (flow rate =0)
Sound level in application at 1m(3.3ft): ≤ 43 dBA (Measured in Sauermann acoustic lab, pump operating with water)	
Mains supply	230V~ 50Hz - 75 W – 0.80A
Detection levels	On : 27mm, Off : 21mm, Safety : 32mm
Safety switch	NC 4 A résistive – 250V
Max. condensate temperature	65°C, 80°C in short peak
Max. condensate acidity	pH > 2 (Gas & oil condensing boilers)
Thermal protection (overheating)	120°C (auto-reset)
Operating conditions	15%: 1s ON – 5s OFF
Protection	IPX4
Safety standards	CE and EAC
RoHS directive	Compliant
WEEE directive	Compliant
Weight (including box)	2.5 kg
Packaging	5 pcs: L293xI136xH183 mm
Pallet quantity	90 pièces

ACTUAL FLOW RATES (l/h)				
Vertical Discharge head	Total tube length (Ø int. 10 mm, 3/8")			
	5 m	10 m	20 m	30 m
1 m	320	270	190	150
2 m	240	200	130	100
3 m	150	110	75	50
3.7 m	50	40	25	15
4 m	0	0	0	0



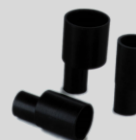
RECOMMENDED ACCESSORIES



Hose Ø int. 10mm (3/8")
 ACC 00125 : 25 m
 ACC 00126 : braided, 25 m



Check valve
 for replacement
 Ø ext. 10 mm (3/8")
 ACC 00801



Adaptators
 Ø int. 24/25 mm: ACC 00225
 Ø int. 32 mm: ACC 00230
 Ø int. 40 mm: ACC 00240