

Si-82 Pack 2

Strong and durable

Part number
SI82CE02UN23

The Si-82 centrifugal pump is designed to be easily installed in any environment. It is capable of evacuating up to 500l/h and suitable for air conditioning units and industrial refrigeration displays. It also tolerates charged, high temperature and acidic condensates (pH>2.5) produced by gas condensing boilers.



- ⊕ High performance, up to 5m vertically
- ⊕ High resistance
- ⊕ Easy installation, with plug-in power cord and reversible pump

Technical details

Max flow rate	132 gph, 500 l/h
Max discharge head	16 ft, 5 m
Max pressure	5,4 m
Mains supply	230V ~ 50Hz - 70W - 0.67A
Operation conditions	30%: 3s ON - 7s OFF
Max condensate temperature	65 °C
Max condensate acidity	pH > 2,5
Protection	IP20
Tank volume	2 l
Weight	2,5 kg
Master pack quantity	4
Safety switch	NC 4 A resistive - 250 V

Detection integrated

Thermal protection 105° C (auto reset)

Pump dimensions

	Length	Width	Height
Pump	279 mm	130 mm	174,5 mm
Packaging	400 mm	300 mm	200 mm

Detection levels

ON	53 mm
OFF	42 mm
SAFETY	64 mm

Pump sound levels

at 3,3ft or 1m in application (dBA)

<= 45

Kit contents

One-piece centrifugal pump with tank
Integrated barb end check valve (external diameter 10mm or 3/8")
Plug-in power & safety cords 1,5 m
Straight connector (external diameter 10mm or 3/8" / 6mm or 1/4")
2screws + 2 plugs

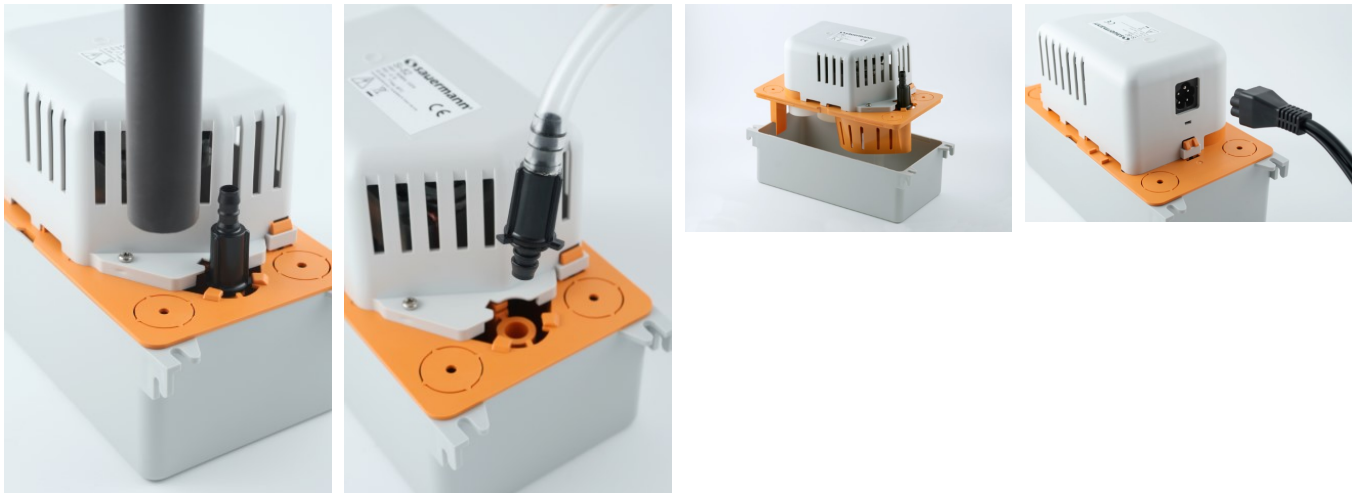
Pump technology

Centrifugal tank pump

Installation

Floor mounted
Hung from ceiling
Wall mounted

Extra product images



Application

Air conditioning
Refrigeration

Safety standards

CE

Ro
HS
and
WE
EE
dire
ctiv

es

Com
plia
nt

in

Source URL: <https://sauermanngroup.com/en/product/pump/si-82-pack-2-2>