

# Si-82 PACK 1

Strong and durable

**Part number**  
SI82CE04UN23

The Si-82 centrifugal pump is designed to be easily installed in any environment. It is capable of evacuating up to 500l/h and suitable for air conditioning units and industrial refrigeration displays. It also tolerates charged, high temperature and acidic condensates (pH>2.5) produced by gas condensing boilers.



- ⊕ High performance, up to 5m vertically
- ⊕ High resistance
- ⊕ Easy installation, with plug-in power cord and reversible pump

## Technical details

|                            |                           |
|----------------------------|---------------------------|
| Max flow rate              | 132 gph, 500 l/h          |
| Max discharge head         | 16 ft, 5 m                |
| Max pressure               | 5,4 m                     |
| Mains supply               | 230V ~ 50Hz - 70W - 0.67A |
| Operation conditions       | 30%: 3s ON - 7s OFF       |
| Max condensate temperature | 65 °C                     |
| Max condensate acidity     | ph > 2.5                  |
| Protection                 | IP20                      |
| Tank volume                | 2 l                       |
| Weight                     | 2,5 kg                    |
| Master pack quantity       | 4                         |
| Safety switch              | NC4 A resistive - 250V    |

Detection integrierter Schwimmerschalter

Thermal protection 105°C (Auto-reset)

### Pump dimensions

|           | Length   | Width    | Height   |
|-----------|----------|----------|----------|
| Pump      | 279 mm   | 130 mm   | 174,5 mm |
| Tank      | 257,3 mm | 107,5 mm |          |
| Packaging | 400 mm   | 300 mm   | 200 mm   |

### Detection levels

|        |       |
|--------|-------|
| ON     | 53 mm |
| OFF    | 42 mm |
| SAFETY | 64 mm |

### Pump sound levels

at 3,3ft or 1m in application (dBA)

<= 45

### Kit contents

One-piece centrifugal pump with tank  
Integrated barb end check valve (external diameter 10mm or 3/8")  
Plug-in power & safety cords 1,5 m  
Straight connector (external diameter 10mm or 3/8" / 6mm or 1/4")  
2screws + 2 plugs

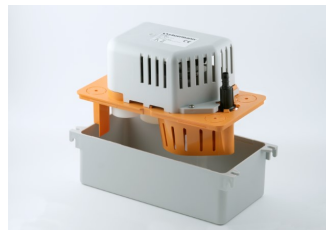
### Pump technology

Centrifugal tank pump

### Installation

Floor mounted  
Hung from ceiling  
Remote above unit  
Wall mounted

### Extra product images



### Application

Air conditioning

### Safety standards

CE

Ro  
HS  
and  
WE  
EE  
dire

ctiv  
es

Com  
plia  
nt

**in**

**Source URL:** <https://sauermanngroup.com/en/product/pump/si-82-pack-1-0>